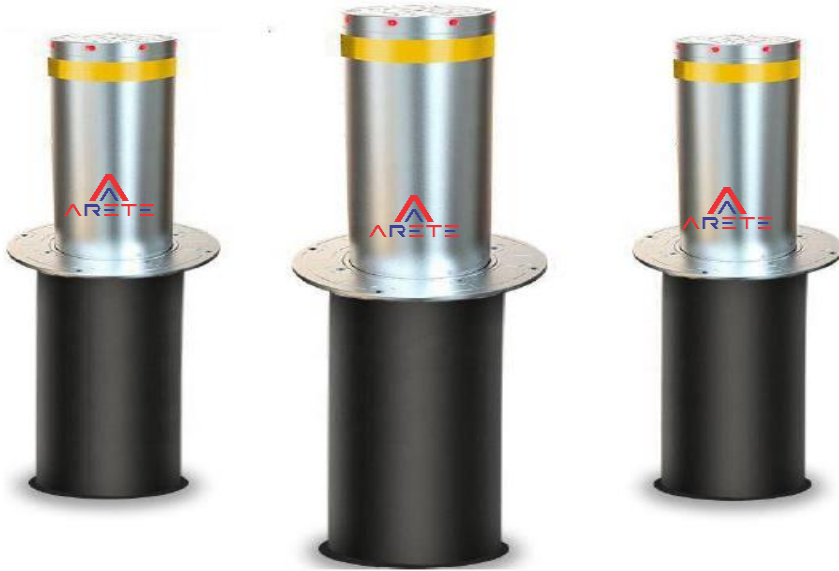


Rising Bollards

AIHB-927

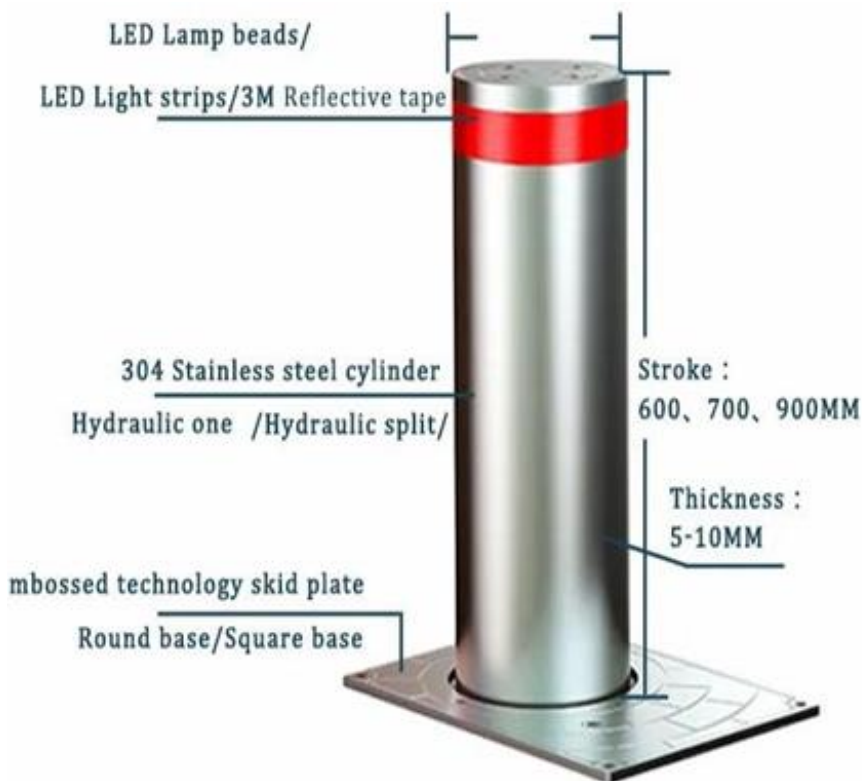


- ✓ AIHB-927 adopts hydraulic drive technology, which is stable and fast. The operation is simple and flexible. It has strong load-bearing and anti-collision capability, low noise, safe and reliable.
- ✓ The fastest time of lifting is 6-7 seconds, adjustable. With a hydraulic drive unit, its operation is low noise.
- ✓ The control unit uses a versatile logic controller, with a variety of functional modes to meet different requirements.
- ✓ The movement can be set to time controlled and the user can freely control the lift height to save energy consumption.
- ✓ In case of a power outage and another emergency, the bollards can be controlled manually by the emergency button to decrease.
- ✓ Top and bottom internal fixed parts are equipped with a current detection sensor and a magnetic sensor respectively, to avoid over-current and limit the bollard movement.
- ✓ AIHB-927 Hydraulic bollard barrier system is widely used in airports, customs, ports, embassies, military bases, banks, prisons, government buildings, parking lots, etc. to control vehicle access. Through the control system, the bollards are hydraulically driven up and down quickly



Rising Bollards

AIHB-927



Control system	Hydraulic
Input Voltage	AC 220V
Power consumption	0.5 KW
Blocking Height	Up to 800 mm
Blocking Diameters	Up to 273 mm
Cylinder Thickness	up to 6 mm
Cylinder Material	Stainless Steel 304
Weight	180 Kg
Opening time	6.0~7.0 Sec (adjustable)
Closing time	6.0~7.0 Sec (adjustable)
Protection Level	IP67
Foundation	Concrete
Working temrature	-20 to +60 degree
Humidity	90% Non Condensing

